
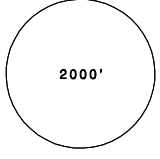
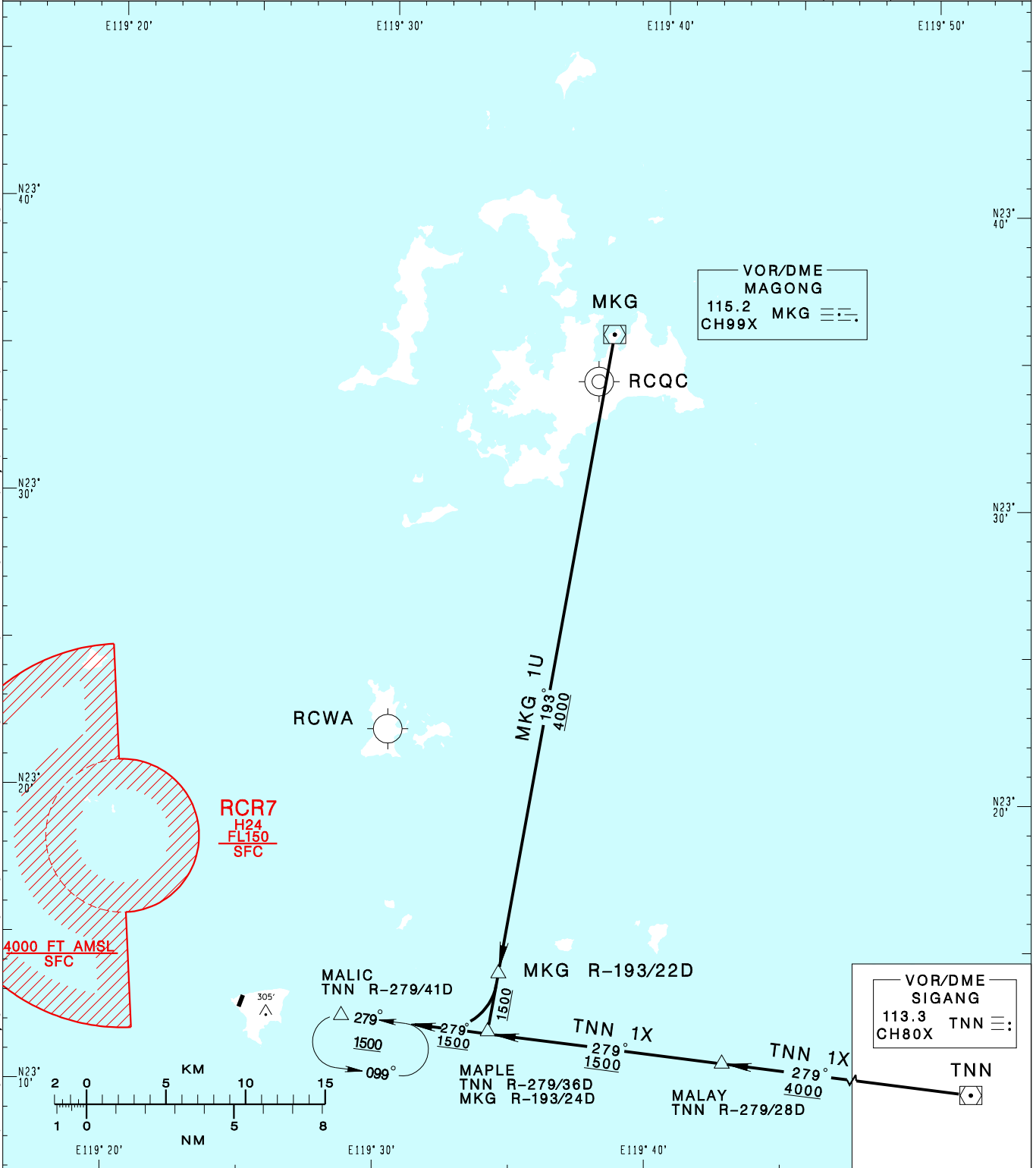


七美機場
QIMEI AD

RCCM STAR
MKG 1U
TNN 1X

KAOSHIUNG APP 128.1 129.9	QIMEI TWR 118.1	  MSA MKG VOR 25NM	
Apt Elev: 63'	Trans Level: FL130		Trans Alt: 11,000'
BEARINGS ARE MAGNETIC; DISTANCES ARE NAUTICAL MILES; ELEVATIONS, HEIGHTS IN FEET			

CHANGES: NEW PAGE NUMBER, UPDATE RESTRICTED AREA VERTICAL LIMITS REPRESENTATION, GRADUATION MARKS AND SCALE BAR ADDED



MAGONG ONE UNIFORM ARRIVAL
Depart MKG, proceed via MKG R-193 to MAPLE then MALIC.

SIGANG ONE X-RAY ARRIVAL
Depart TNN, proceed via TNN R-279 to MALAY then MALIC.

NOTE
If unable to maintain VFR before MALIC, maintain 1,500 and hold at MALIC.